



# Idaho P.E.O. Chapter House Newsletter

Our goal is to share, educate, enlighten, and welcome each of you to our Idaho treasure, The Idaho P.E.O. Chapter House.

APRIL 2021

## IDAHO GIVES 2021

Thursday, April 29th through  
Thursday, May 6th

In 2020, due to the generosity of our sisterhood, our goal of \$15,000, was not only attained, but exceeded! **Many THANKS to ALL who gave.**

Our Chapter House Fundraising Committee states that this year our attention for Idaho Gives donations will be to enhance security and safety for our ladies. It is our plan to add and increase outdoor security measures for each of the cottages, the main house, and grounds. We also plan to upgrade safety measures inside each cottage and suite, as needed. Our number one goal is to keep all of our residents as safe and secure as possible.

Idaho Gives dates are April 29 - May 6. Our goal for 2021 is \$20,000. You might consider this to be a lofty goal but we believe, with your continued unselfish giving, it is doable!



### HOW TO DONATE:

1. **GO** to [www.idahogives.org](http://www.idahogives.org)
2. **SEARCH** for Chapter House. Our P.E.O. Chapter House will come up.
3. **CHOOSE** the amount you would like to donate and hit ENTER.
4. It will walk you through to completion.





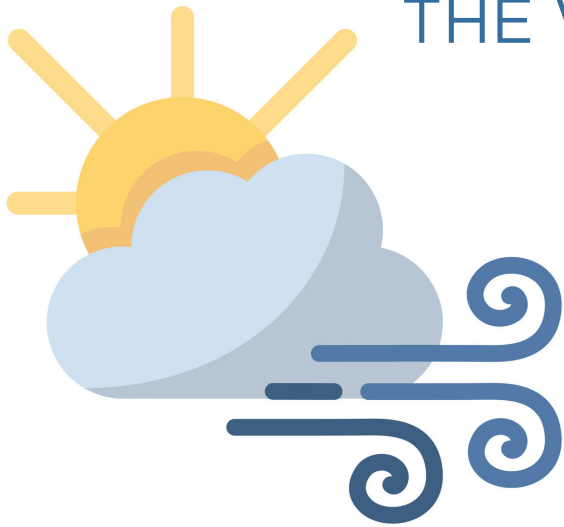


# THE PARK

In 1986 a strip of unused land, bordered by Kimball Street on the west and our Chapter House property, was offered for sale. The Chapter House Board decided to purchase it; quit claim deeds were obtained. The Esther Hill/BIL Chapter House Park became a reality. The plan is to always protect the desirability of our cottages by assuring privacy for those cottages with this park.



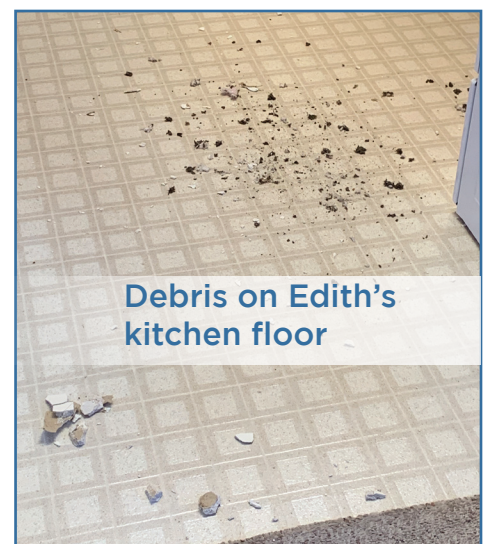
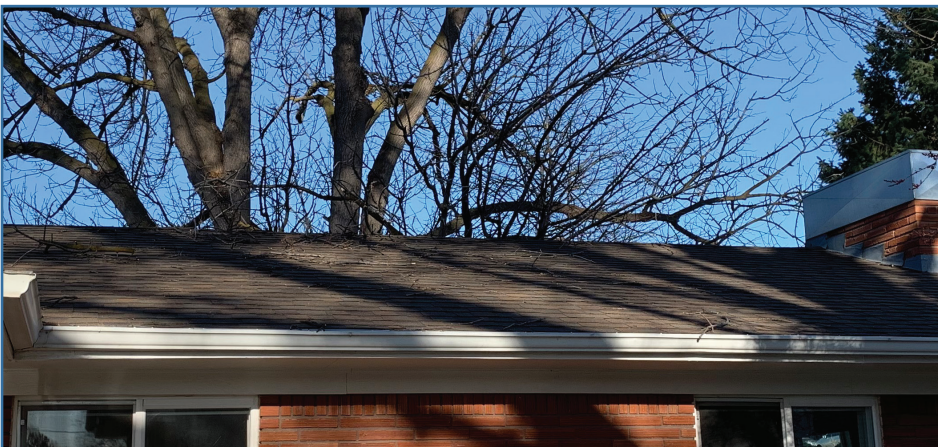




## THE WIND STORM!

One recent night Treasure Valley residents were awakened to the noise of a wind storm tearing through the neighborhood. Among those who heard the wind was our own Edith. But imagine her surprise the next morning when she entered her kitchen to get a cup of coffee to find debris strewn over the floor, and looking up to discover **a large branch poking through the ceiling!!**

As of this writing, repairs have been made and Edith's cottage has been restored, with grateful thanks to our handy repairman!





## BOARD MEMBERS

You are NOT too LATE!!

Two sisters have signed on to serve on our Chapter House Board, BUT... we still have openings for TWO MORE!! Are YOU one of the two?

Please contact our manager, Jennifer Kerr, (208) 459-3552 ASAP.

What an opportunity to give AND to gain!



## YARD WORK

On Friday, April 2nd (a beautiful sunny day), three generous volunteers were hard at work (following COVID-19 guidelines, of course) planting plants that had been generously donated by a thoughtful P.E.O. sister.

- **Darlene Harryman**  
*Retired Chapter House Manager  
(pictured to the right)*
- **Pat Benedict**  
*Former Chapter House Board  
President (pictured to the left), and*
- **Mary Jo Nyblad**  
*Grounds & Maintenance Chairman*



### Contact Us:

We invite you to submit your stories, experiences and testimonials so that we can spread the word about the Chapter House. Email to [idoecho@gmail.com](mailto:idoecho@gmail.com), with your questions or comments. Thank you.

### Chapter House Newsletter Team

- Mary Buchanan, H
- Judy Grunke, T
- Sharon Hubler, BT
- Jacque Scott, AU
- Jennifer Kerr, N



<http://peochapterhouseidaho.org>